



KEEPING IT FRESH **fpef** fresh produce EXPORTERS' FORUM SOUTH AFRICA

News from the FPEF – 27 January 2022

Dear FPEF Members,

The recent (and current) challenges with regards to our industry, and the actions taken to manage and/or mitigate it, again showed the resilience and solution-driven character of our industry. Be assured that from the FPEF's side we strive to pro-actively identify challenges and develop solutions, but sometimes challenges arise "unannounced" - and then we try and find a solution as soon as possible. Some examples of such actions taken, as well as other activities, are being summarised in this edition of our newsletter.

High cube container issue:

Following our continued engagements with Agbiz and BUSA, both have now written letters to the Minister of Transport and in addition, have issued media releases on it. We trust that it will have the desired effect, namely that the Regulation be adapted or scrapped.

SARS: Draft rules under section 64E for accreditation has been published on the SARS website for public comment.

The draft rule can be accessed at the following link:

<https://www.sars.gov.za/legal-counsel/preparation-of-legislation/draft-documents-for-public-comment/>

The due date for comment is 4 February 2022.

MEMBERSHIP FEES



Just a friendly reminder that membership fees are due **on or before 31 January 2022**.

A big **'thank you'** to all members who have already paid their fees.

MARKETING AND PROMOTIONS

Fruit Logistica Berlin 2022:

We are still awaiting information on whether the dtic (Department of Trade, Industry and Cooperation) will fund a National Pavilion at Fruit Logistica Berlin - which will take place from 5 to 7 April. The dtic will make the decision in the next two weeks.

Currently Germany is experiencing very high levels of Covid-19 and we are closely monitoring the situation. South Africa is also on Germany's high-risk areas list (effective since 23 January 2022). Travelers must register at least 14 days before traveling online ([Digital Registration on Entry \(einreiseanmeldung.de\)](https://www.einreiseanmeldung.de)) – if proof of recovery or vaccination is submitted before entry in Germany, no quarantine is necessary.

Planned dates for trade shows in 2022

- **Asia Fruit Logistica:** The next edition of Asia Fruit Logistica returns to Hong Kong's AsiaWorld-Expo on 7 to 9 September 2022.
- **WorldFood Moscow:** The largest food exhibition in Russia will take place from 20 to 23 September 2022 in Moscow at the Crocus Expo.
- **Fruit Attraction:** The next face to face event of Fruit Attraction will be held from 4 to 6 October 2022 in Spain, Madrid.
- **PMA Fresh Summit Orlando:** This event will take place from 27 to 29 October 2022 in Orlando, USA.



TRANSFORMATION NEWS

FPEF Graduate Placement Programme

Recruitment for the FPEF's 2022 graduate placement programme is well underway and several appointments have already been confirmed. Agrijob, our recruitment service provider, has a short list of high calibre graduates available for commercial, logistics and post-harvest quality positions. The FPEF will make a salary contribution of R5,000 per month per graduate for up to twelve months to any FPEF member who appoints a graduate through the programme. To appoint a graduate or find out more about the programme, please contact Johannes Brand. johannes@fpf.co.za.



FPEF Annual Transformation Survey

The FPEF conducts an annual transformation survey amongst its members with four short questions to gather vital information required to keep the government up to date on the transformation status of our industry. All information provided will be kept confidential and will only be shared on an aggregated basis. The deadline for collecting this information is **today, 27 January**. All members who have not responded yet, kindly respond to our Transformation manager Johannes Brand by close of business today. johannes@fpf.co.za

Changes to FMS

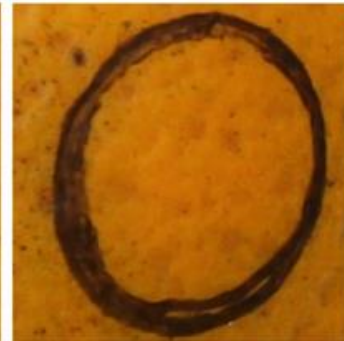
- The citrus FMS has been circulated together with a FMS User Guide and Training Material for citrus.
- The CBS RMS document is still to be finalised.
- Please consider attending the various Pack house road shows for more information on the important aspects of the FMS and CBS RMS.



Advanced stage
(CBS-positive)



Early stage
(CBS-positive)



Healthy spot on infected
sample (CBS-positive)



Healthy spot on healthy
sample (CBS-negative)

Port of Cape Town: The FruitSA shipping meeting has taken place providing necessary action items to execute during the deciduous and throughout the citrus season. Additionally, the FPEF and PPECB will participate in discussion and also onboarding cold stores wishing to make use of 24-hour inspections. This will improve nighttime reefer container exporters alleviating much needed pressure from the port. Inland container depot facilities remain a top priority in the short and medium term. Increasing the number of facilities and improving utilisation of existing facilities (e.g., Belcon), could make a significant difference while deciduous fruit export volumes will rapidly increase from week 5 and onwards. In conjunction with Belcon, rail opportunities between Belcon, Cape Town and Port Elizabeth should be prioritised by TFR. Industry will revisit these options in the near future.

The private sector and the Western Cape provincial government have already shared such valuable knowledge, offered time and support but still the industry and province are losing millions of Rands. We can make various changes to the external environment (and have already), but the internal environment of the port of Cape Town keeps deteriorating. There is a distinction between risk and actual risk and actual risk must form part of strategy. In this case, the actual risk is the internal environment of the port.

The third annual port stakeholder workshop for Port of Cape Town hosted by Minister David Maynier, is scheduled for the morning of 4 February 2022.

- This provides an opportunity for port stakeholders to form part of the discussions surrounding the various logistics challenges in the port of Cape Town.
- The following topic is of interest to exporters and would be handled by the FPEF: *Historical & anticipated growth in fruit exports and private sector participation (PSP's).*



Considering all the above, we trust that you will be able to continue operating with a positive attitude.

**Kind regards,
Anton Kruger**